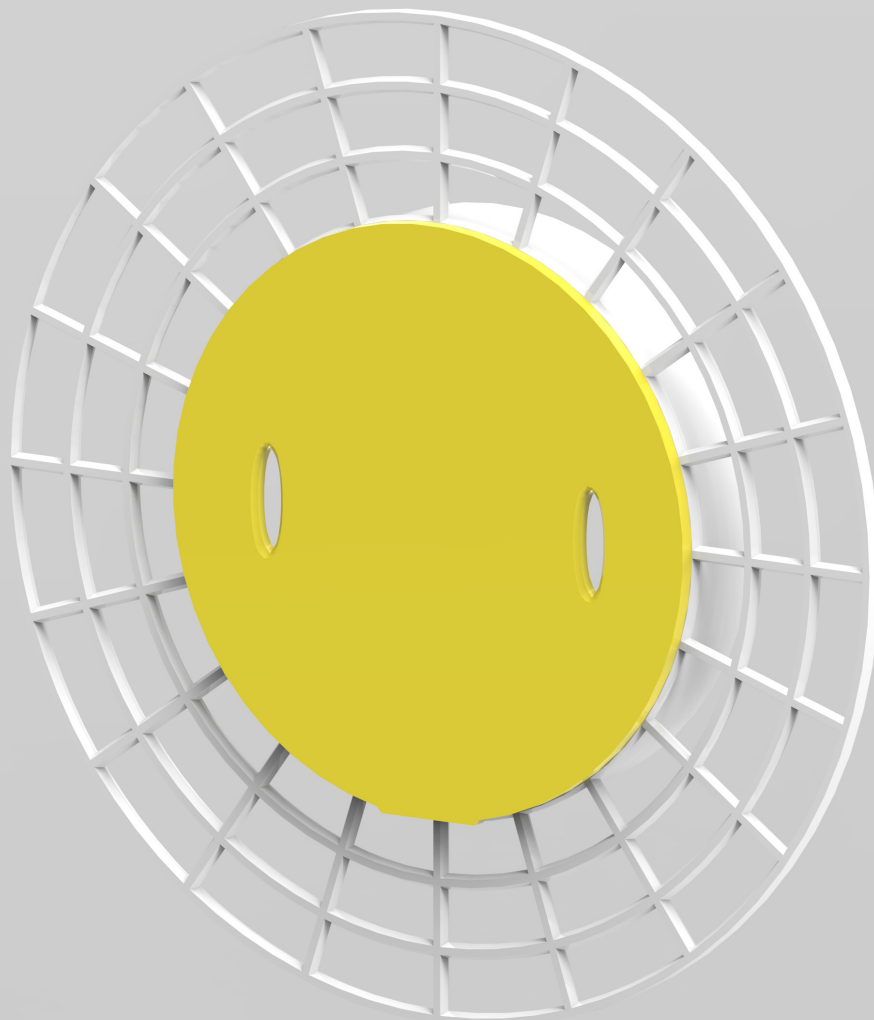


***Your proven answer
to soundproof ventilation
in noise affected buildings.***



Exterior Circular Lathe Plate

Product Code: 85-05/05-01



Best new product
DesignBuild Australasia



Top 10 Eco Product in the USA
Sustainable Building Magazines



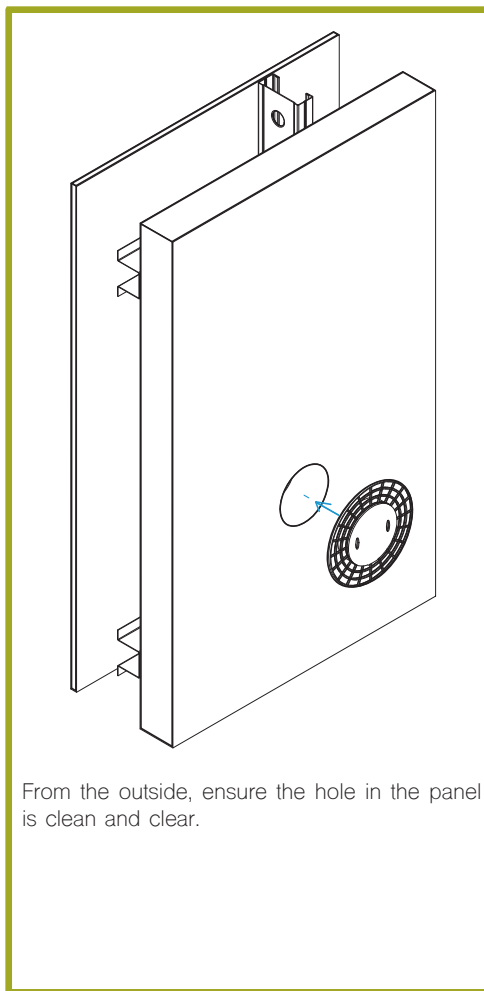
Silver Medal
International Salon des Inventions.
Geneve, Switzerland

Information

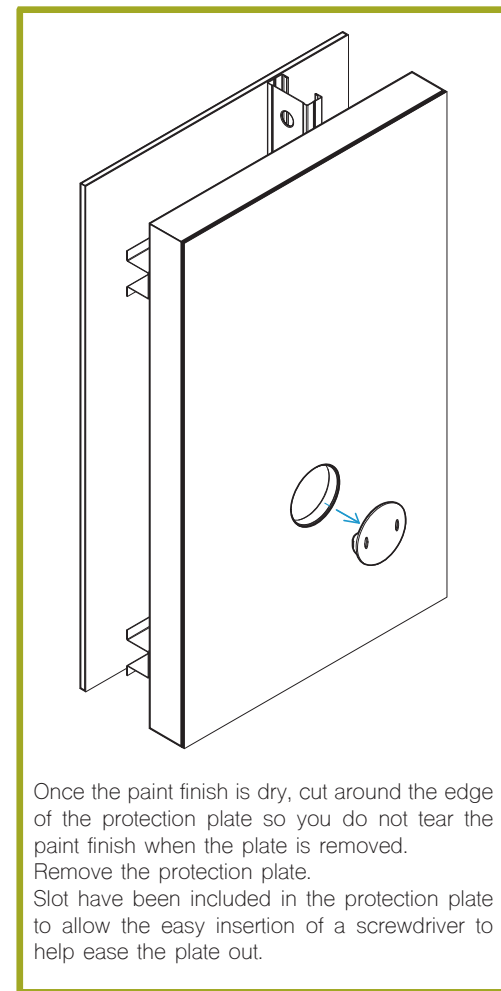
The Silenceair Exterior Circular lathe plate is designed to assist with the efficient and effective installation of the Silenceair exterior 100mm weather louvre. The lathe plate is designed to be used on all forms of masonry, such as Hebel panel or brickwork. It comes in a 12mm thickness for cement render finishes on masonry (85-05/05-01), and a 5mm thickness for skim coat finishes on Hebel (85-05/12-01).

The Lathe plate is lined up with the air outlet position on the Silenceair ventilator and fixed to the wall. Once render and painting is complete, the protective insert is removed, offering a smooth and precise opening to insert and fix into place the Silenceair adjustable air inlet register.

The lathe plate can be used for 100mm diameter circular weather louvres that are inserted directly into the Silenceair air module, or where the weather louvre is attached to a 100mm diameter flexible duct.



From the outside, ensure the hole in the panel is clean and clear.

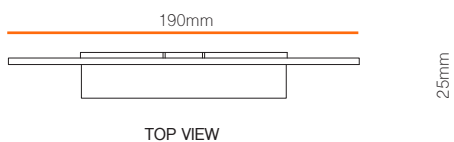


Once the paint finish is dry, cut around the edge of the protection plate so you do not tear the paint finish when the plate is removed. Remove the protection plate. Slot have been included in the protection plate to allow the easy insertion of a screwdriver to help ease the plate out.

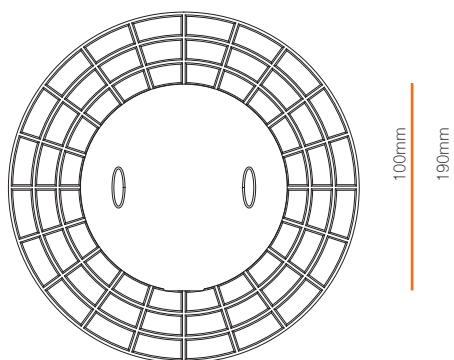
Product Code

85-05/05-01: 100mm Diameter
85-06/05-01: 75mm Diameter

Dimensions

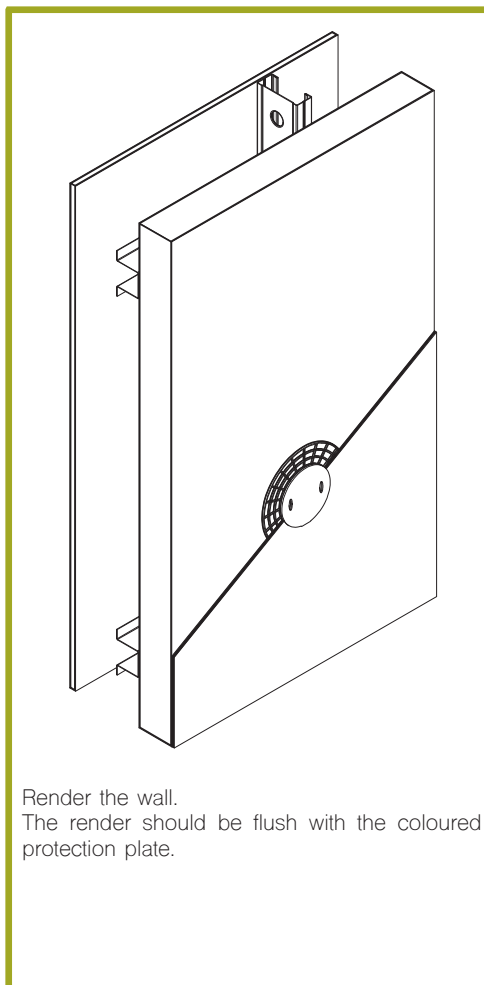


TOP VIEW

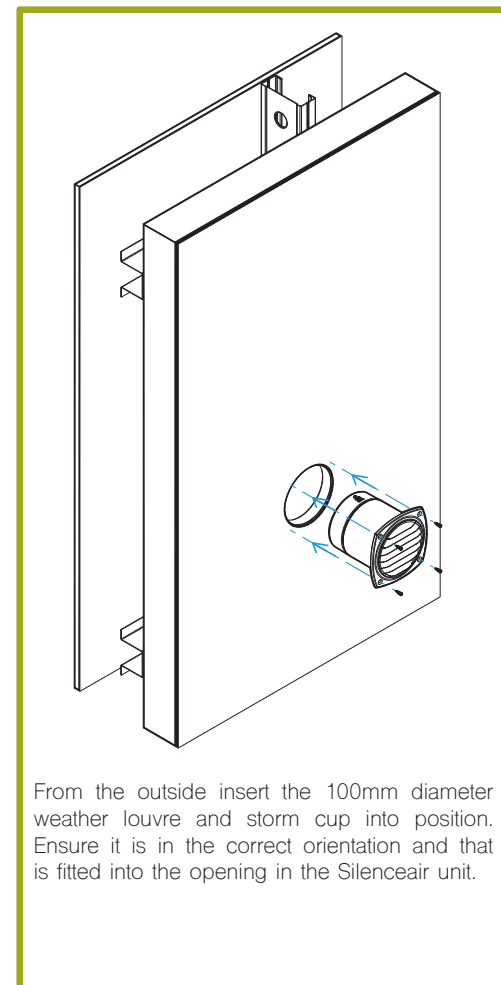


FRONT VIEW

Open Vent Area 5,200mm²
Weight 0.04kg
Material Recyclable ABS



Render the wall. The render should be flush with the coloured protection plate.



From the outside insert the 100mm diameter weather louvre and storm cup into position. Ensure it is in the correct orientation and that is fitted into the opening in the Silenceair unit.

For more information please contact

www.silenceair.com enquiries@silenceair.com +61 2 9555 7215

Patents and Patents Pending Silenceair is a registered trademark of Silenceair International Pty Limited