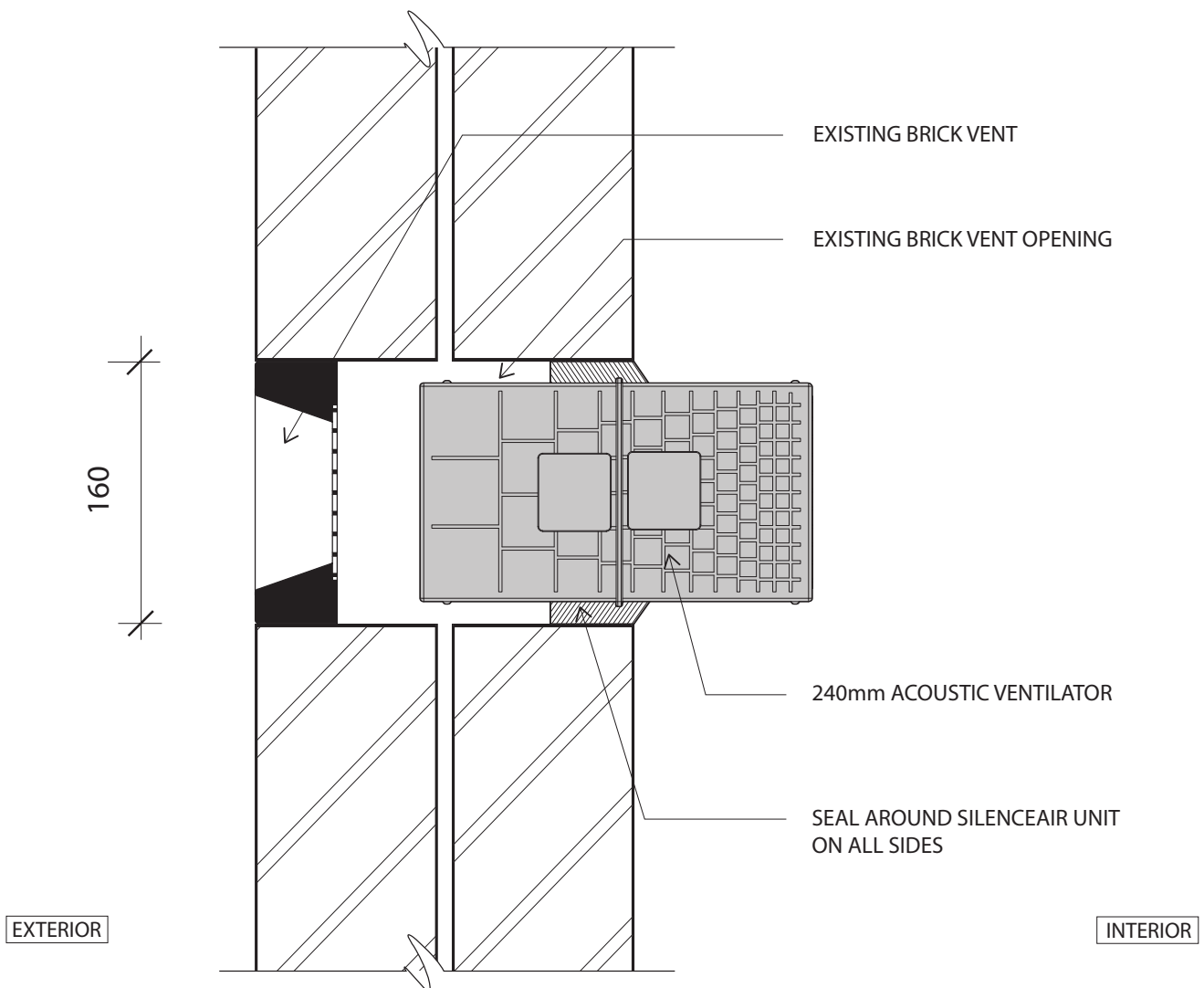
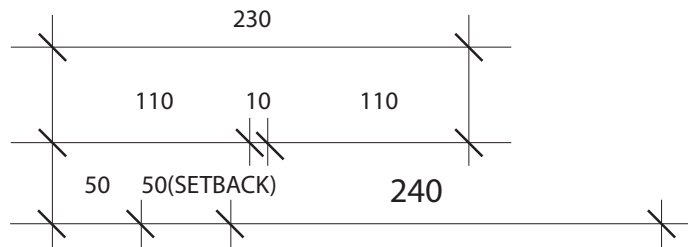
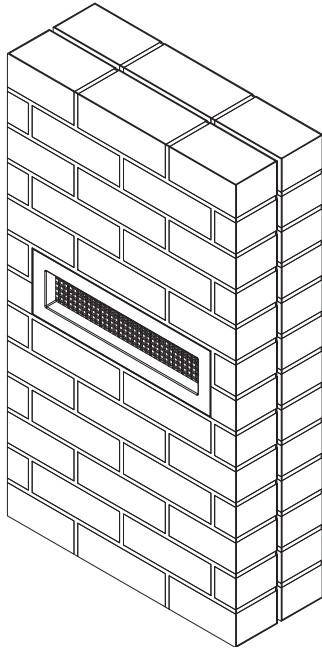


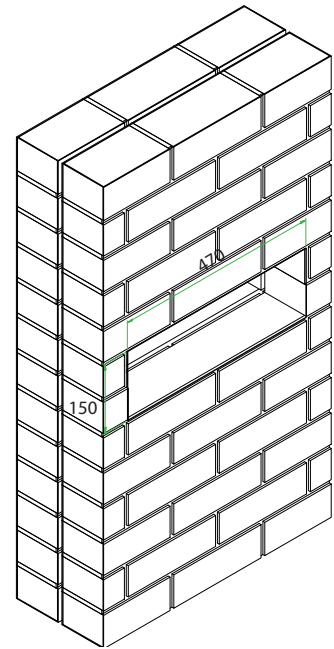
**240mm Acoustic Wall Ventilator
 Retrofitting into an Existing 460mm x 160mm mesh vent for Sub-Floor ventilation**



1



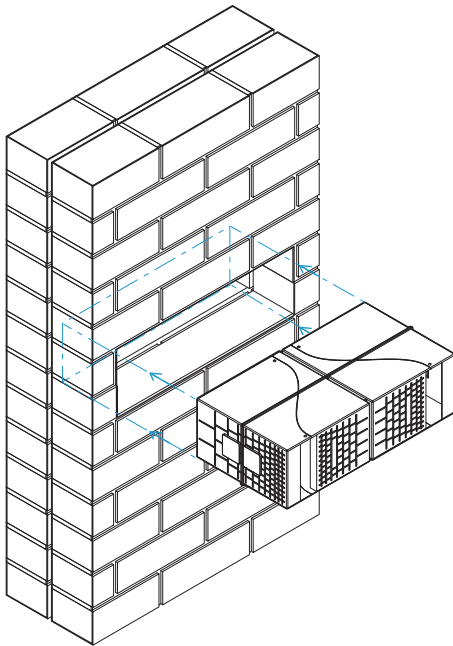
2



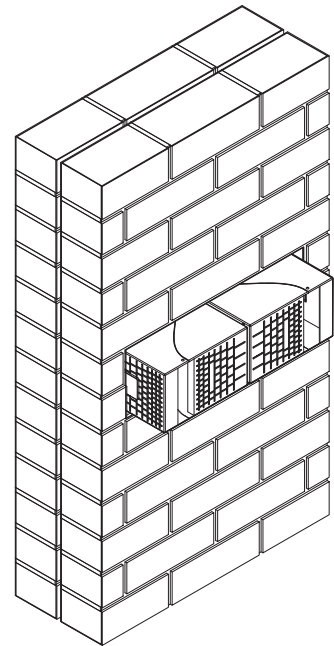
- From the outside, inspect the sub-floor vent opening and ensure there is a clear passage through the brickwork behind the existing brick vent.

- WHEN YOU HAVE SUB-FLOOR ACCESS :-
- From the inside, check there is a clear opening of at least 2 brick long by 2 bricks high.

3



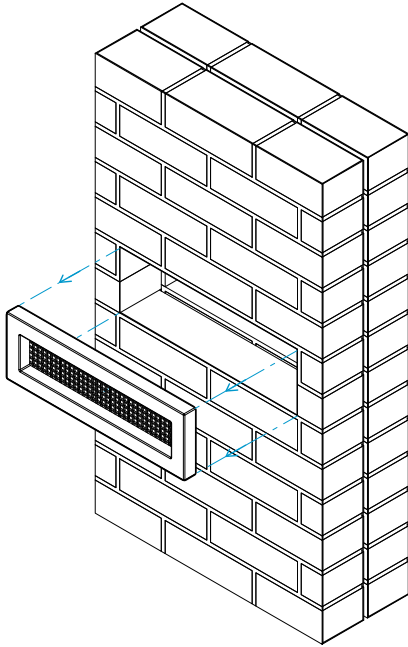
4



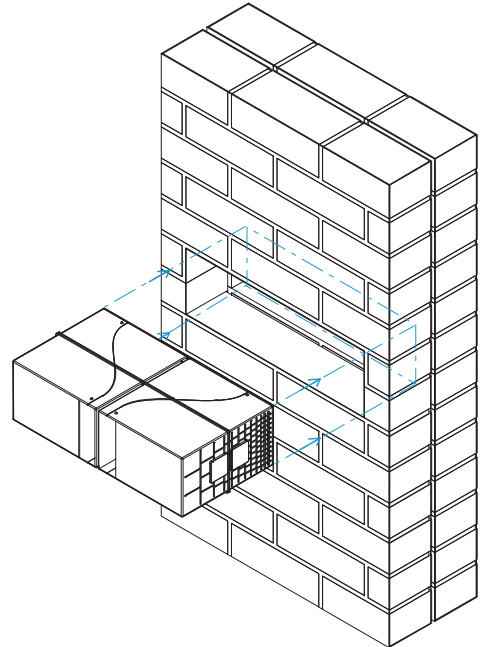
- Insert the two Silenceair acoustic vents into location. Ensure it is in the correct orientation.
- Allow a 50mm clearance to the mesh vent.

- Seal around the edges to ensure sound does not leak past the Silenceair unit.
- The installation is now complete.

5



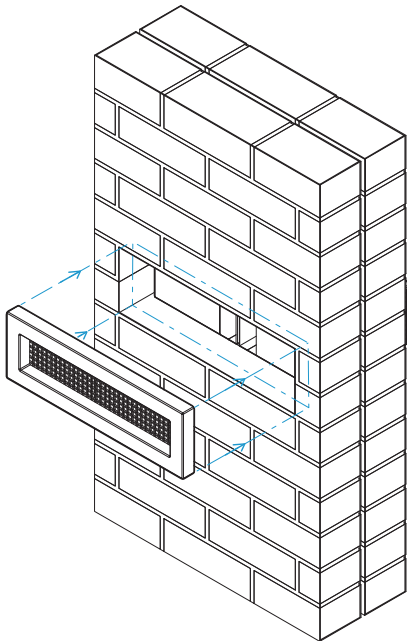
6



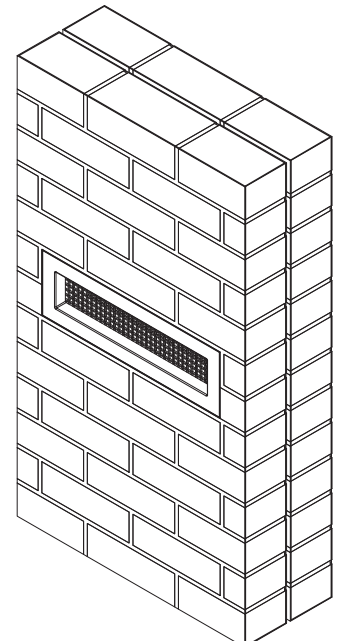
- WHEN YOU DO NOT HAVE SUB-FLOOR ACCESS :-
- From the outside, remove the existing brick vent.
- Ensure the air passage is clear of debris.

- Insert the Silenceair unit into the air passage far enough to allow for the repositioning of the brick vent.
- Seal around all sides to ensure noise does not leak around the Silenceair unit.

7



8



- Re-insert the brick vent and make good.

- Installation is now complete.
- The Silenceair unit is completely hidden in the wall.

NOTES

- Silenceair reserves the right to modify or reissue technical brochures without notice.
- © 2019 Silenceair International Pty Ltd. ABN 44 096 462 949

Date of Publication: January 2019.