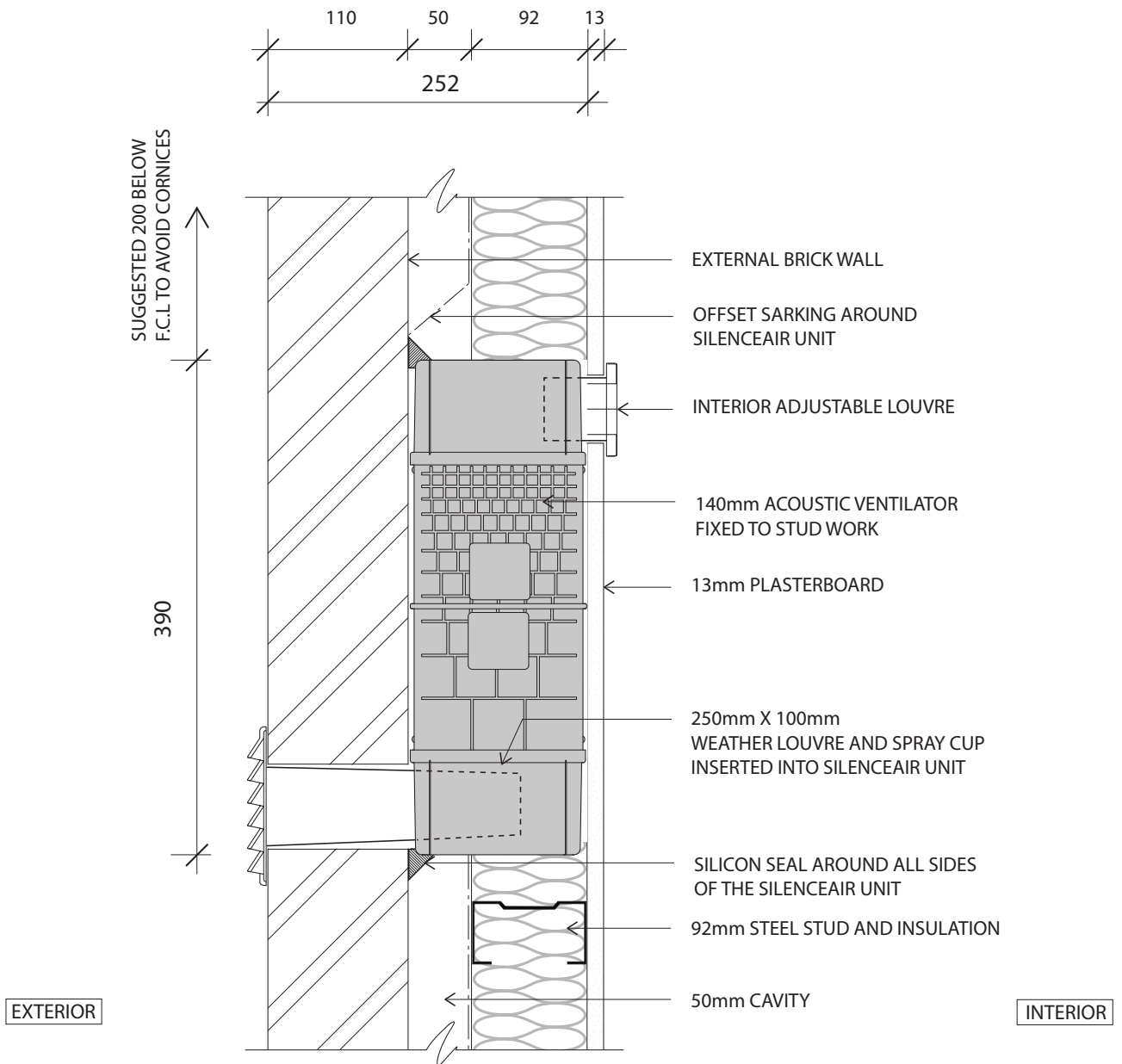
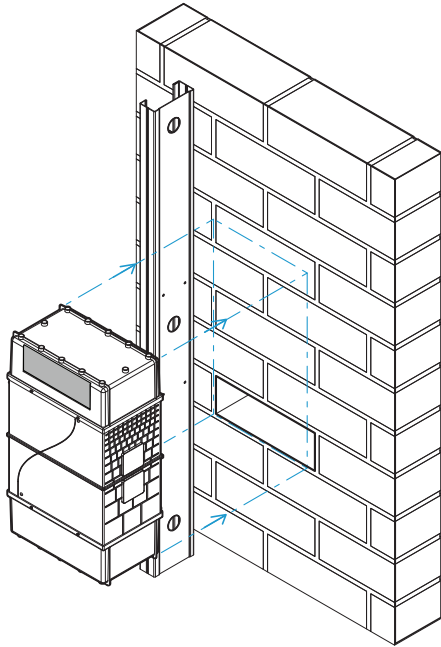


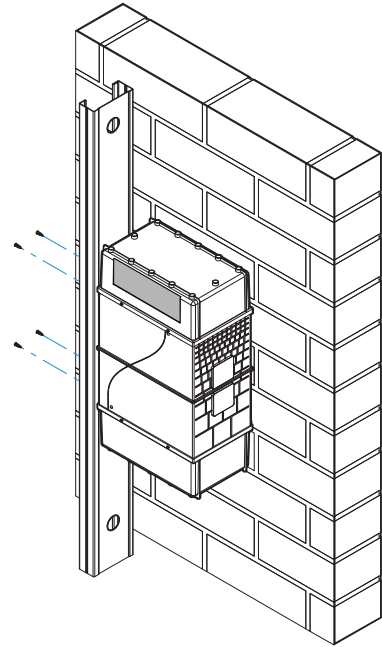
**140mm Acoustic Wall Ventilator  
 Installed in Brick Veneer wall system**



1



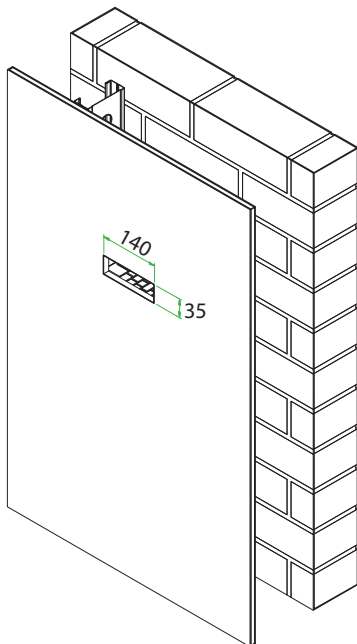
2



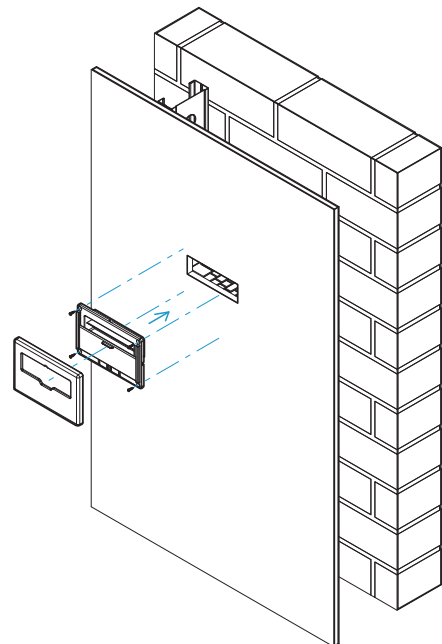
- Prior to building the brickwork, identify the preferred fixing location of the Silenceair unit. The unit has clear instructions written on it for the correct orientation.
- As the brickwork is laid, ensure an opening 1 standard brick high and 1 standard brick wide is created in the wall. This must line up with the external vent opening in the unit. Ensure the opening in the brickwork is clear of debris.

- Screw fix the Silenceair unit into place through the studwork or directly onto the brickwork. The unit is robust and can be screwed or glued into position without affecting the performance of the unit.
- Seal around the edges of the unit to ensure a close fit to the brickwork and prevent sound escaping through any gaps.

3



4



- Mark the location of the interior vent opening onto the plasterboard interior lining prior to installing the plasterboard.
- Fix the interior plasterboard sheet into position.
- Cut a 140mm wide \* 35mm high hole in the plasterboard. Ensure the cut-out in the plasterboard lines up with the interior vent opening of the Silenceair unit.

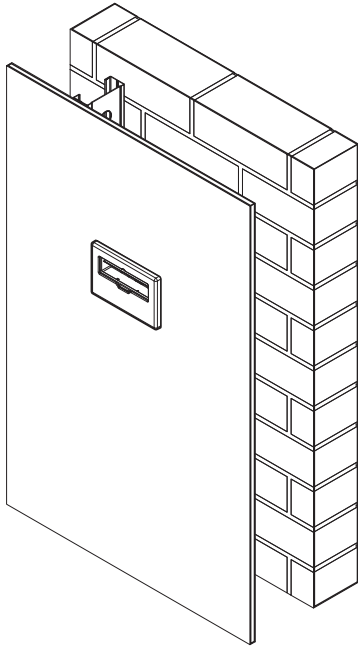
- Fix the interior adjustable louvre into place on the plasterboard after the wall has been painted.

For more information please contact

[www.silenceair.com](http://www.silenceair.com) [enquiries@silenceair.com](mailto:enquiries@silenceair.com) +61 2 9555 7215

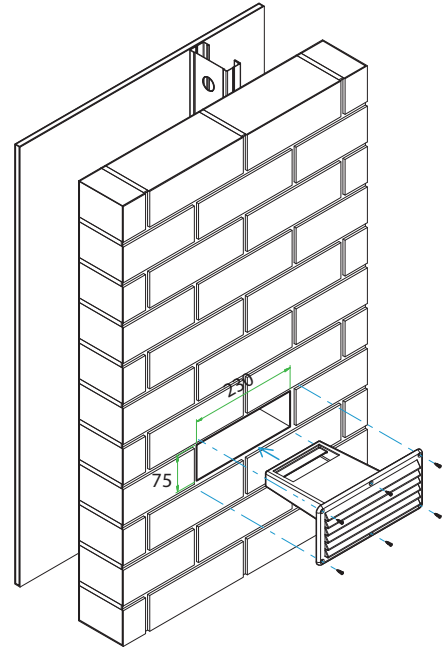
Patents and Patents Pending. Silenceair is a registered trademark of Silenceair International Pty Limited

5



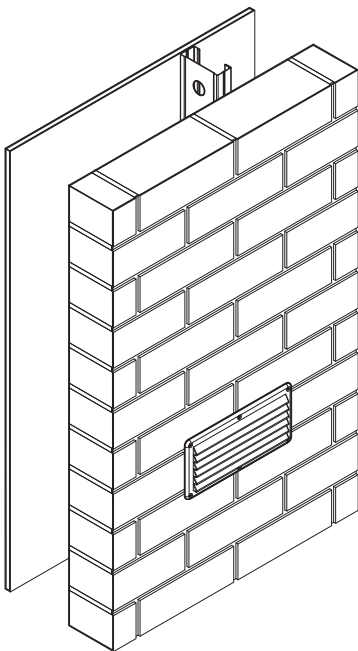
- The Silenceair unit is completely hidden in the wall.
- Only the face plate of the interior adjustable louvre is visible.

6



- On the outside wall, insert the pre-painted exterior weather louvre and spray cup into the brick opening and ensure the weather louvre and spray cup are correctly inserted into the Silenceair unit. Colour coordinated screws are provided with the weather louvre.
- Ensure the weather louvre and spray cup are in the correct orientation (Louvres facing down) and fix into place.

7



- The Silenceair unit is completely hidden inside the wall cavity. Only the face of the pre-painted weather louvre is visible.
- The weather louvres can be factory painted to colour match the colour scheme of the building. Call us to discuss lead times to ensure there is adequate notice prior to the removal of the scaffolding.

## NOTES

- Silenceair reserves the right to modify or reissue technical brochures without notice.
- © 2018 Silenceair International Pty Ltd. ABN 44 096 462 949
- Date of Publication: October 2018.

For more information please contact

[www.silenceair.com](http://www.silenceair.com) [enquiries@silenceair.com](mailto:enquiries@silenceair.com) +61 2 9555 7215

Patents and Patents Pending. Silenceair is a registered trademark of Silenceair International Pty Limited